



TO: All Dealers

BULLETIN: #T-62-10

DEPT: Service and Parts

DATE: April 16, 1962

SUBJECT: PLUNGER RETAINER (RACK & PINION ASSY.)TRIUMPH HERALD

Some steering units incorporate a circlip and spring plate to retain the plunger in the rack and pinion assembly. Should circlip failure occur, modify the unit to the current screwed cap and spring method of retaining the plunger, as illustrated overleaf and described below:

1. Remove and dismantle the steering unit as described in the Service Manual (Group 4).
  2. Tap the plunger boss housing to a depth of - .44" (12.2 mm). using a 15/16" UNF. 16 TPI tap.
  3. Thoroughly clean the housing and pack with the correct grade of grease when refitting the rack and pinion.
  4. Fit new plunger 120946; spring 126765; and screwed cap 132053; placing two packing washers 133745, and sufficient shims 120949 and 120959 between the cap and housing to obtain correct end float.
- NOTE: The end float should be between .004" to .008" (0.1 to 0.2 mm) or the minimum amount consistent with free movement from lock to lock.
5. Refit the steering unit.

NEW PARTS REQUIRED

<u>Description</u>	<u>Part Number</u>	<u>Quantity</u>
Grease Plug	129242	1
Screwed Cap	132053	1
Packing Washer	133745	2
Spring	126765	1
Plunger	120946	1
Shim (0.002")	120959	As required
Shim (0.004")	120949	As required

Repair Operation Time - 2 hours, 20 minutes

This is not a campaign and should be employed only when necessary to effect routine repairs.

*H. T. Yeager*  
 Zone Service Manager

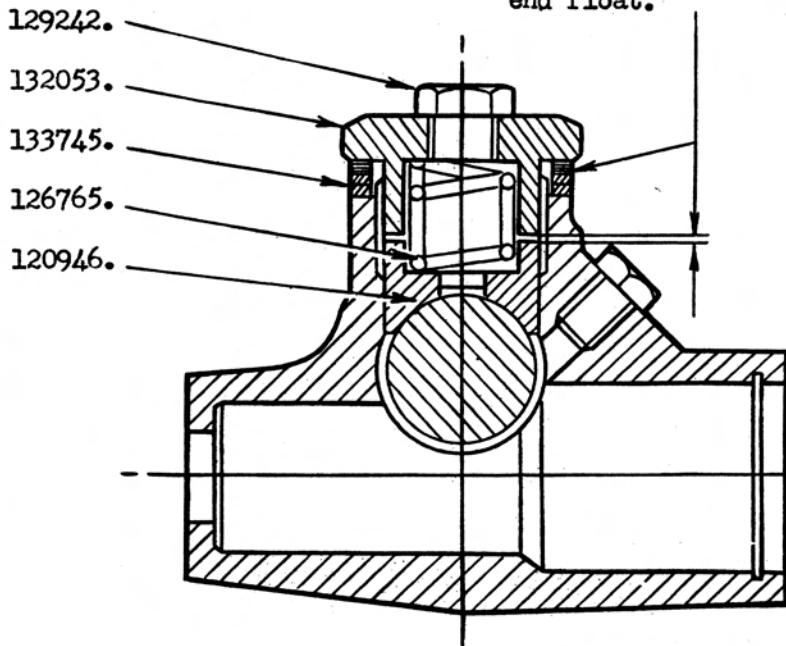
W. T. Yeager

zgs

1 illustration attached

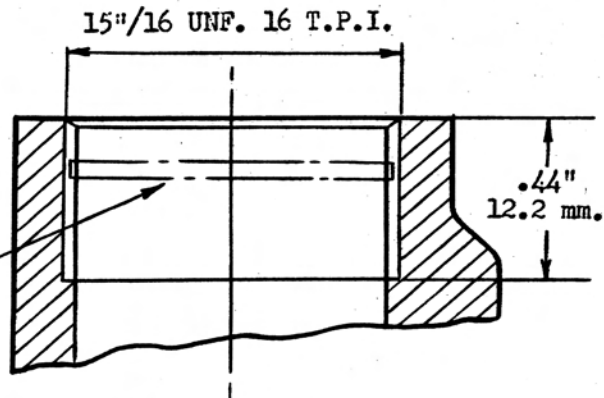
4/27

Use shims 120949 and 120959 as required to give 0.004" - 0.008" (0.1- 0.2 mm.) plunger end float.

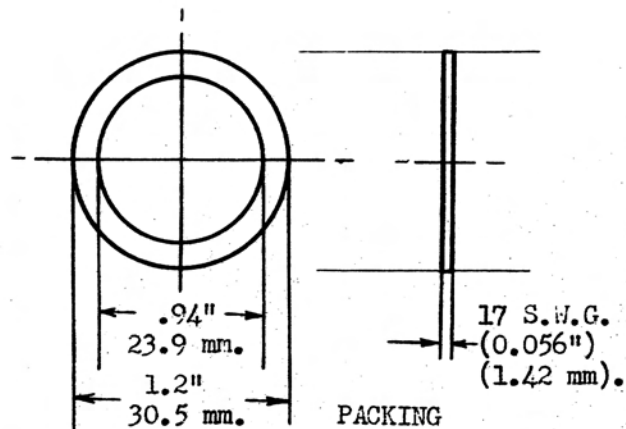


This method of securing plunger may be incorporated on Part Number 205628 and 304737 when serviced for complaint of circlip not holding in position.

CIRCLIP SLOT.



BOSS TAPPING DETAILS.



PACKING  
WASHER 133745.